

CLYDESDALE COLLIERY DISASTER

Five Unanswered questions

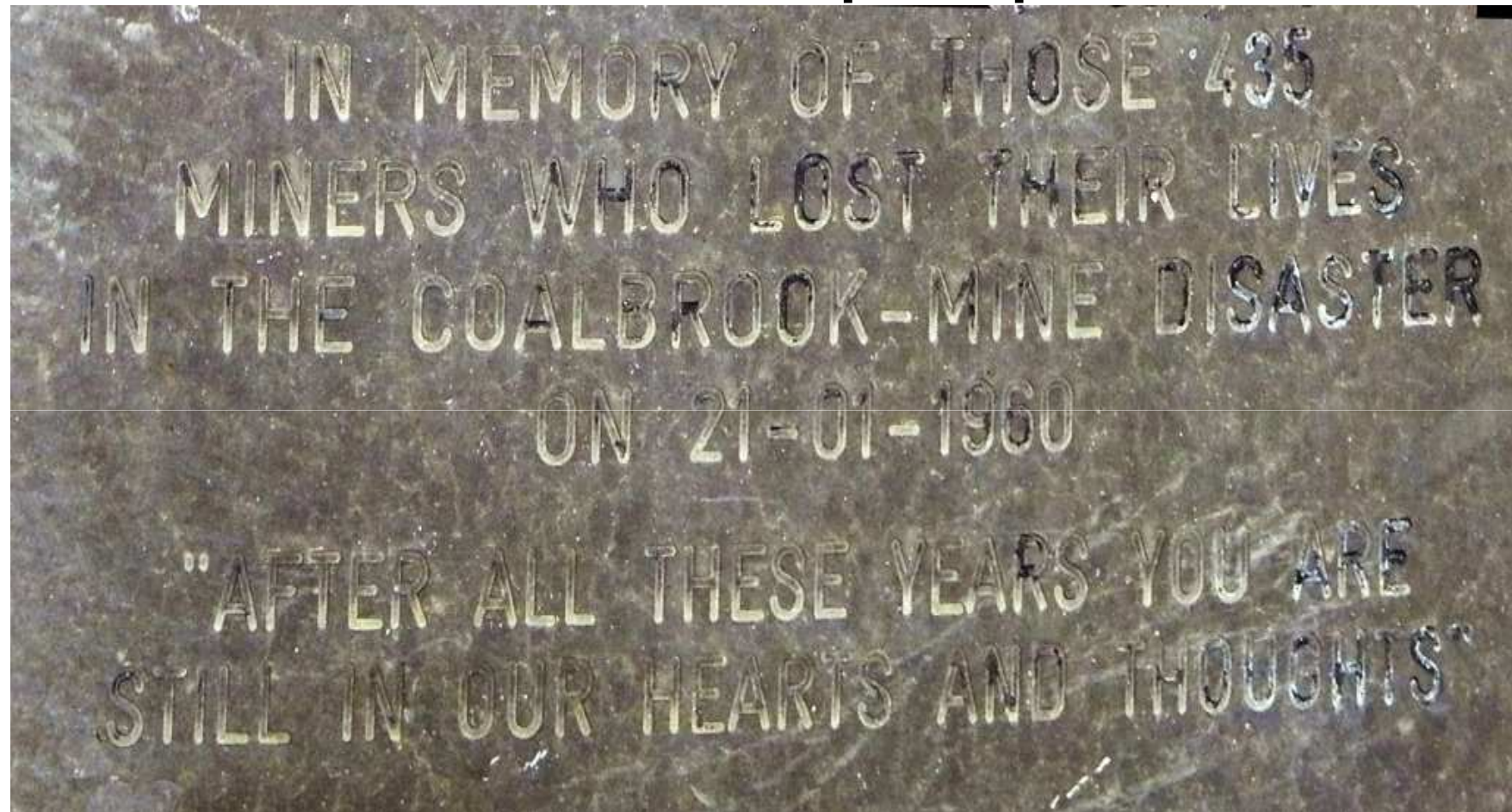
Dennis Schaffer

Professor Emeritus, University of KwaZulu Natal,
South Africa.



CLYDESDALE MEMORIAL

Memorial plaque



Memorial plaque

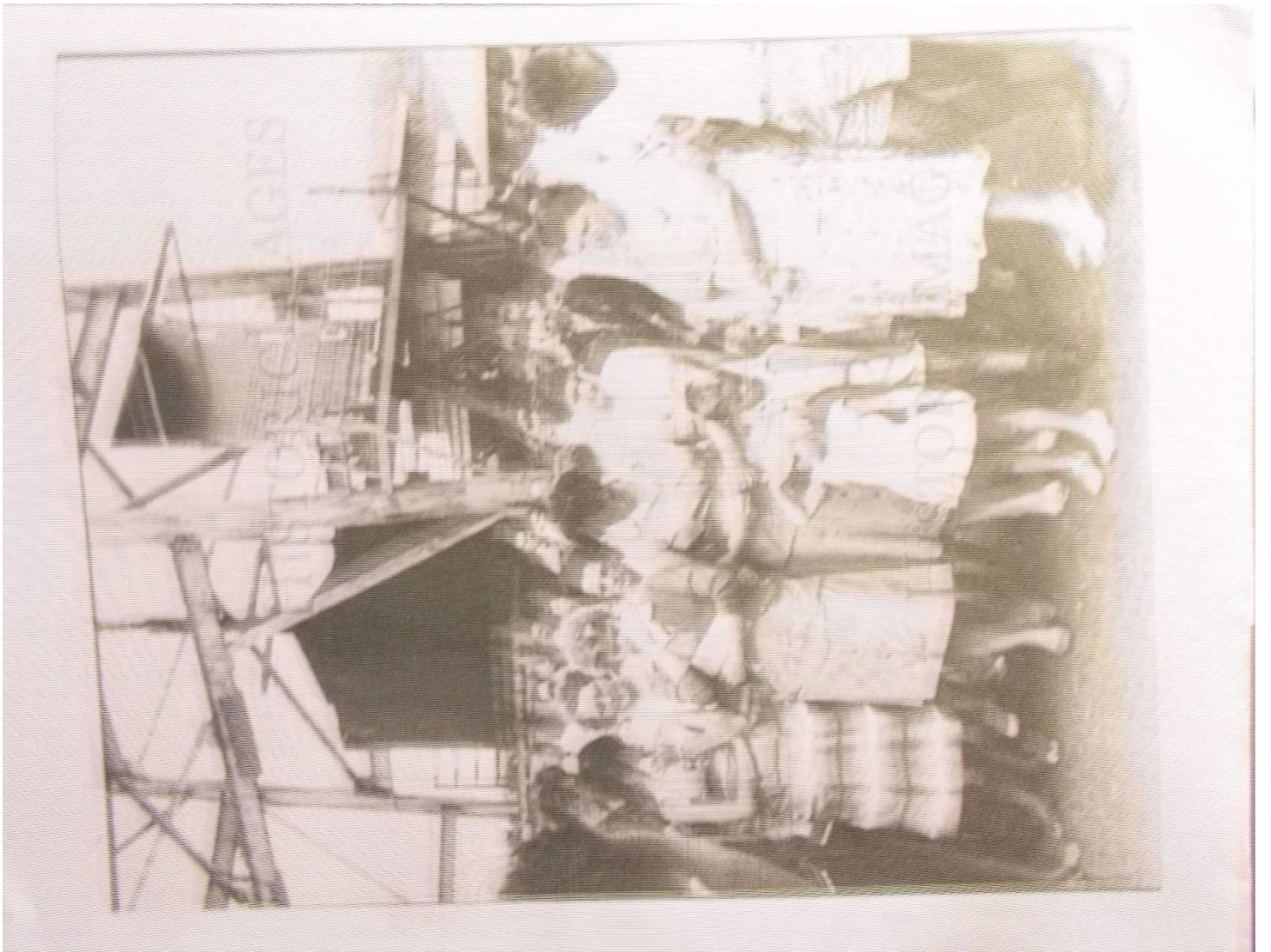
In memory of those 435 miners who lost their
lives

in the Coalbrook mine disaster on 21/01/1960.

“After all these years you are still in our hearts
and thoughts”



Newspapers no longer in print



lat in-
oerige
k van
same-
ke in
uit-
omste
ddros
ver-

ywl
olisie
t dat
lanor
e be-
pende
e ge-
tser-

e
het
en-
pp-
er-
is.
in-
de
tie

aa



Fi N

WE
nieur.
vande
deur
genad
skaf
benod
Nie
motor
die m
voer.

Bei M

KAA
burger
mnr. V
raadsv
dat hy
vir die
ramp
te roep

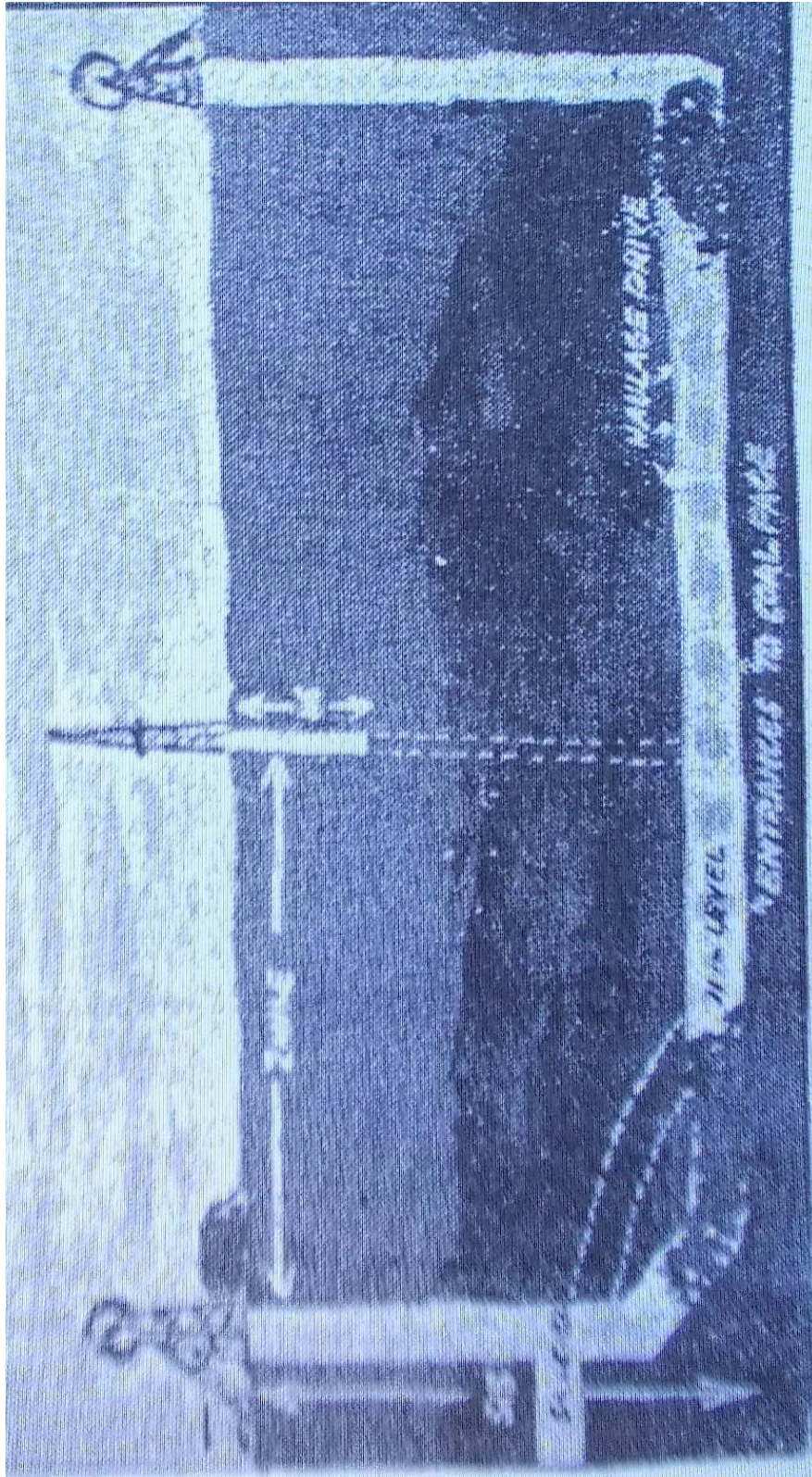
VAN MYN

Afjuik-kommissaris van Potlako in
d'n besoek aan die rampfontein by
oring het, het 'n dringende beroep
e getelsterde myn te besoek nie.
g voral met die oog op die naweek
os verlate naweek, duisende mens-
e mense kan gerus tuisly, aange-
in die gebied toegelaat sal word nie.
l dat die werkers in die gebied —
is doen om die vasgekeerde myn-
gehuider word nie.

te gebied is geen plekniekplok af
gesê.

NUWE





An actor's immersion of the situation at Cystostale Colliery, where more than 400 men are trapped. On the left is the main shaft which, to the 11th level, where the men are, is 55 feet deep. The incline to the 11th level is

age and to cut a way through to where the miners may be. This by-pass is indicated by dotted lines. At centre is the high speed drill which is now in operation and seeks to cut through to the 11th level. It has penetrated to a depth

to attract the entombed men followed by a microphone. It is also hoped to sink a new shaft to the affected level, but this would take about a fortnight. On the right is the ventilation shaft which is also blocked. It must be empha

56ft 6ins – Soil & Shale
19ft – Shale
42ft 6ins – Sandstone
117 ft 8 ins – **Dolerite**
20 ft – Sandstone
111 ft – Shale
31ft 9 ins – Sandstone & Shale
10 ft 13 ins – Shale and Coal
15 ft 2 ins – Sandstone & Coal
31 ft 5 ins – Sandstone
32ft 6 ins – Shale
11ft 4ins – Coal
Tunnel in which men were trapped.

- 1) Why was Colebrook required to step up coal production?
- 2) Why were miners prevented from leaving the mine?
- 3) Why was such poor compensation paid to black miners?
- 4) Why were Special Branch members at the mine?
- 5) Why did Unions and Government agencies not commemorate the event after 50 years?